

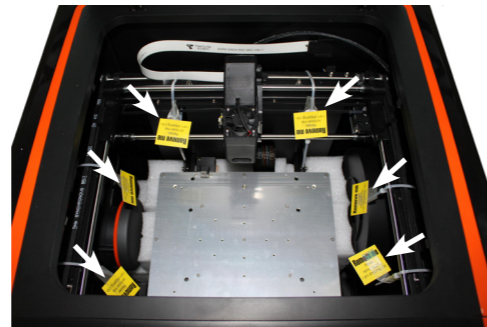
UPBOX Quick Start Guide

1 Remove the foam.

The foams on and under the build platform can be removed by hand without moving the platform.



2 Remove the nylon ties from the smooth rods.

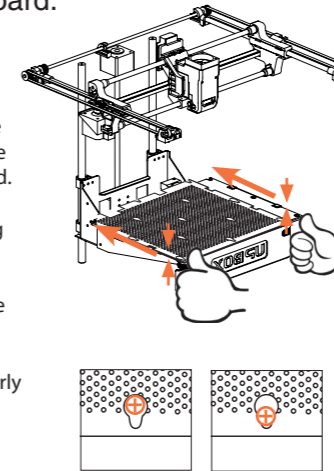


3 Install the perf board.

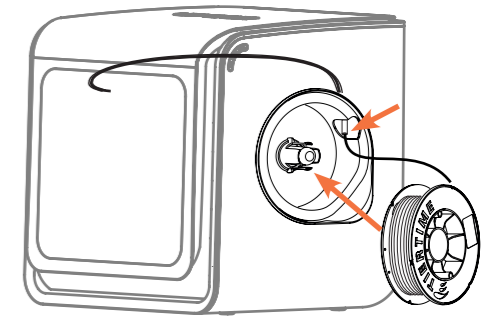
Position the perfboard on the build platform make sure that the all of the flat head screws on the heating plate are inside the holes on the perfboard.

Press the perf board and the heating plate together at the lower left and lower right corners. Then slide the perfboard forward to lock it onto the heating plate.

Make sure all holes are locked properly so that the perf board is flat.



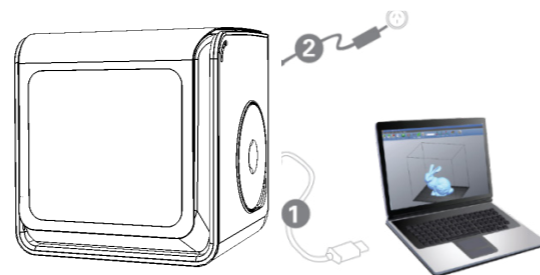
4 Install the filament spool and insert the filament into the filament guiding tube.



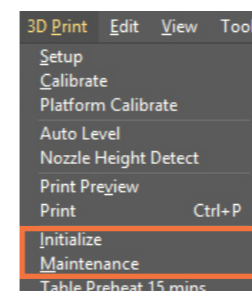
5 Download and install the latest Up Software from the support section of www.up3d.com.



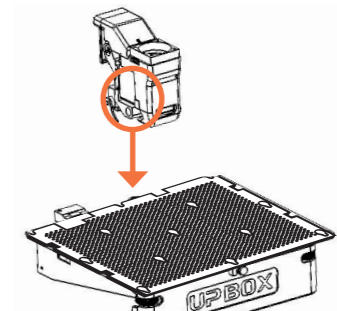
6 Plug in the power and USB cables. Turn on the printer. The printer driver will be installed automatically after connecting to the computer.



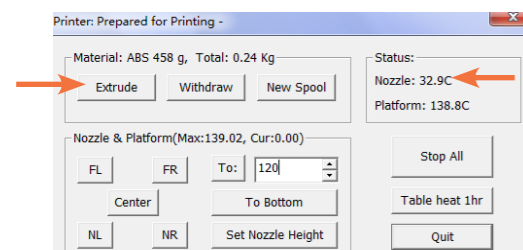
7 Click "Initialize" to start initialization. (After powering up, printer must be initialized for further operation)



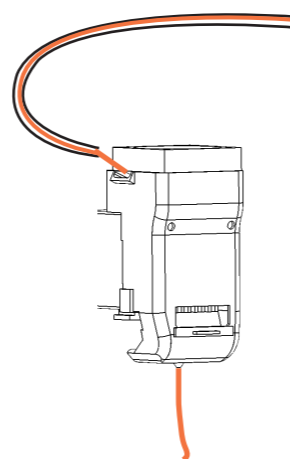
8 Choose "3D Print" - "Autolevel". The autoleveling probe will be released and make its measurements. After printers completes autoleveling, the nozzle height detection process will be initiated automatically.



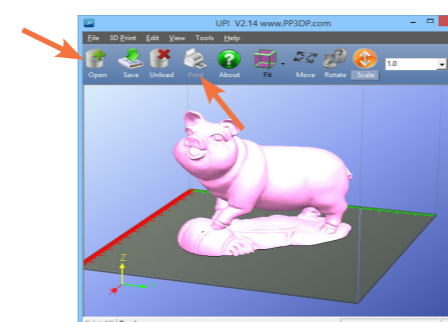
9 Choose "3D Print"- "Maintenance". Click extrude to begin heating the print head.



10 When the printing temperature is reached, the printer will buzz and gently push the filament into the print head until it extrudes at the nozzle.



11 Load a model and press "Print".



12 Press "OK" to begin processing the print.

